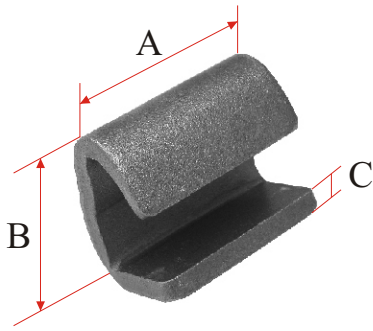


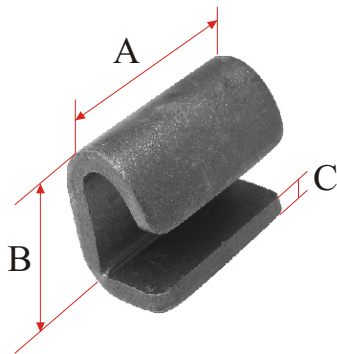
## BISAGRA COMPLETA

REF.	A (mm)	B (mm)	C (mm)
TIR-8 S/S ZINC	124	27	55



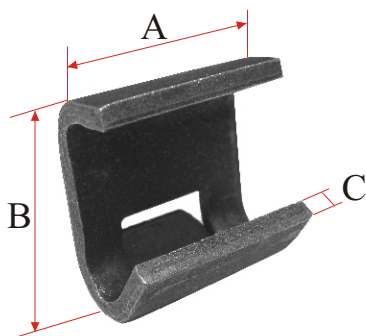
## BISAGRA COMPLETA

REF.	A (mm)	B (mm)	C (mm)
S-1	50	43	6



## BISAGRA COMPLETA

REF.	A (mm)	B (mm)	C (mm)
S-2	50	43	6

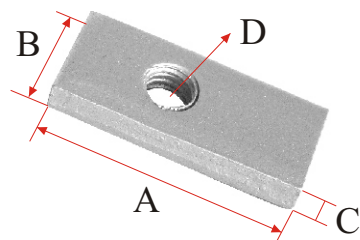


## BISAGRA COMPLETA

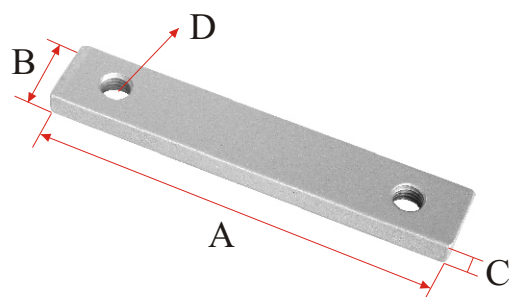
REF.	A (mm)	B (mm)	C (mm)
S-3	50	40	6

**BISAGRA COMPLETA**

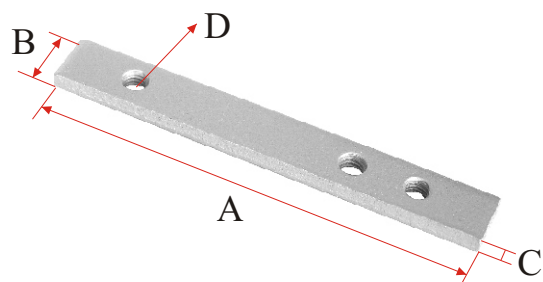
REF.	A (mm)	B (mm)	C (mm)	D (mm)
PLT-1 ZINC	40	18	6	8


**BISAGRA COMPLETA**

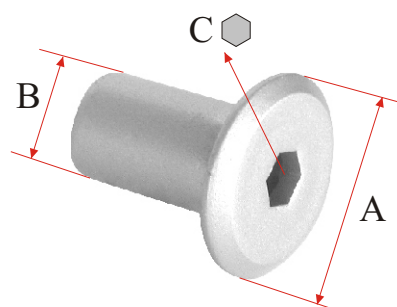
REF.	A (mm)	B (mm)	C (mm)	D (mm)
PLT-2 ZINC	95	18	6	8

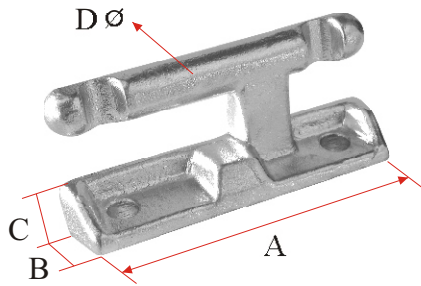

**BISAGRA COMPLETA**

REF.	A (mm)	B (mm)	C (mm)	D (mm)
PLT-3 ZINC	135	18	6	8


**BISAGRA COMPLETA**

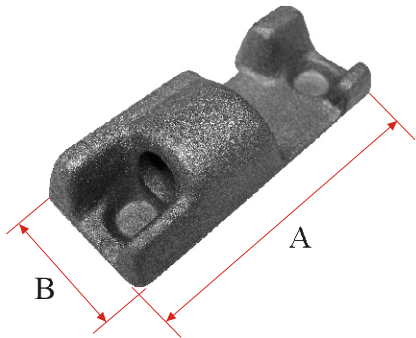
REF.	A (mm)	B (mm)	C (mm)
CHAMPIÑON ZINC	24	12.5	6





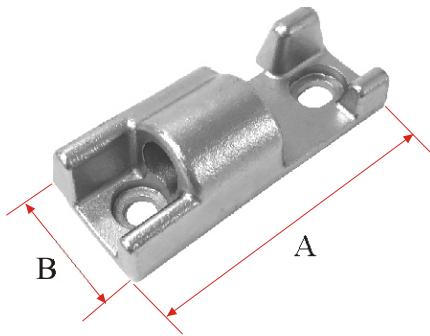
**BISAGRA COMPLETA**

REF.	A (mm)	B (mm)	C (mm)
M TIR-7 ZINC	98	23	14
M TIR-7 INOX	98	23	14



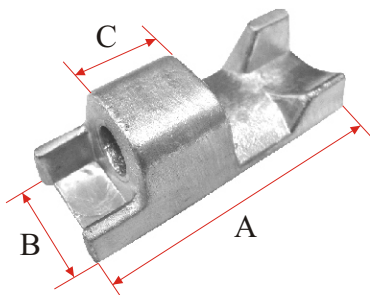
**BISAGRA COMPLETA**

REF.	A (mm)	B (mm)	C (mm)
H TIR-7 BG	100	41	12
H TIR-7 BD	96	41	6



**BISAGRA COMPLETA**

REF.	A (mm)	B (mm)	C (mm)
H TIR-7 INOX	94	39	8.5

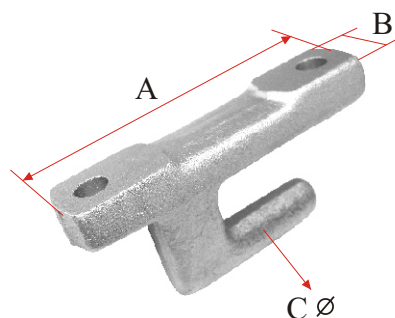


**BISAGRA COMPLETA**

REF.	A (mm)	B (mm)	C (mm)
H TIR-7 ALU	100	39.5	30

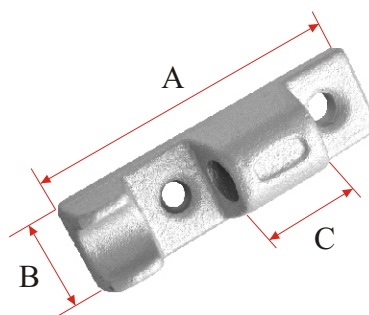
**BISAGRA COMPLETA**

REF.	A (mm)	B (mm)	C (mm)
M TIR-9 ZINC	90	21	12



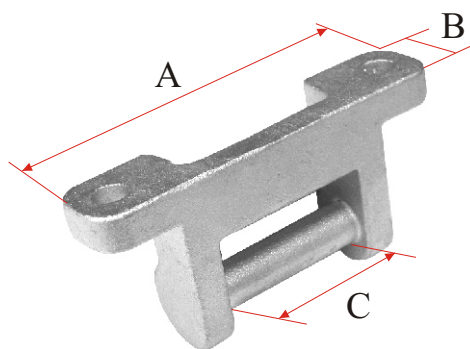
**BISAGRA COMPLETA**

REF.	A (mm)	B (mm)	C (mm)
H TIR-9 ZINC	92	27	32



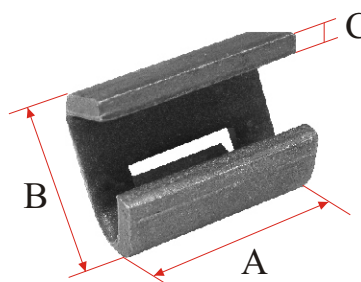
**BISAGRA COMPLETA**

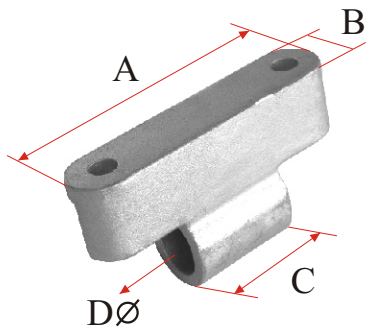
REF.	A (mm)	B (mm)	C (mm)
M TIR-11 ZINC	107	24	46



**BISAGRA COMPLETA**

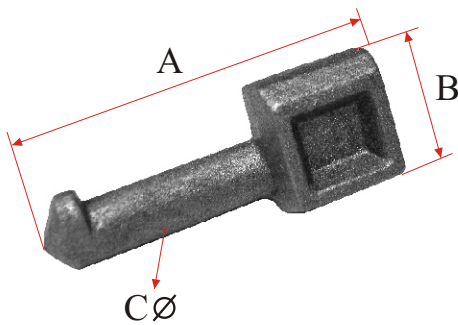
REF.	A (mm)	B (mm)	C (mm)
S TIR-11	43	46	5





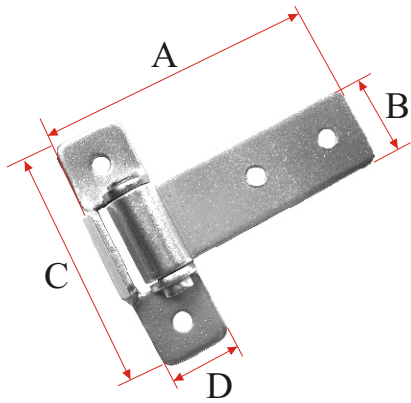
**BISAGRA COMPLETA**

REF.	A (mm)	B (mm)	C (mm)	D (mm)
H TIR-14 ZINC	99	23	39.5	20



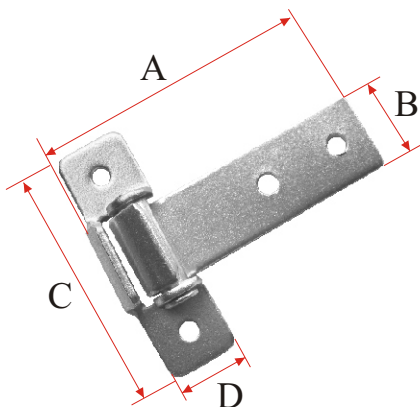
**BISAGRA COMPLETA**

REF.	A (mm)	B (mm)	C (mm)
M TIR-14	91	33	15



**BISAGRA DE CHAPA**

REF.	A (mm)	B (mm)	C (mm)	D (mm)
BS-21 ZINC	100	29	85	25

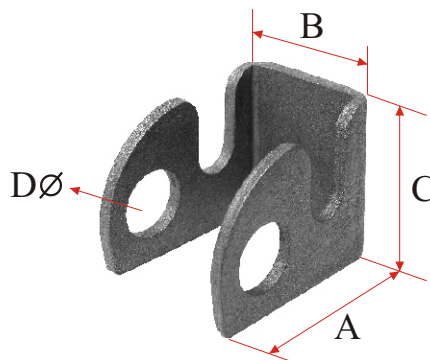


**BISAGRA DE CHAPA**

REF.	A (mm)	B (mm)	C (mm)	D (mm)
BS-22 ZINC	101	28	85	25

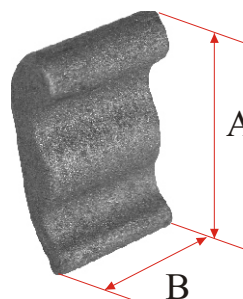
**BISAGRA DE CHAPA**

REF.	A (mm)	B (mm)	C (mm)	D (mm)
SICT	75	55	58	23



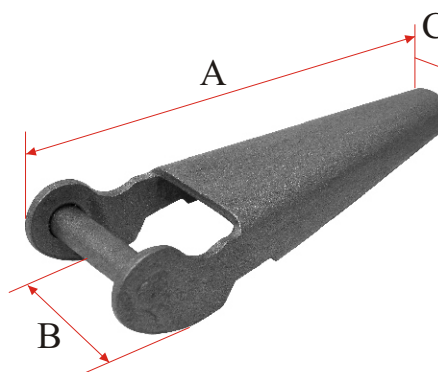
**BISAGRA DE CHAPA**

REF.	A (mm)	B (mm)	C (mm)
UCT	61	35	14



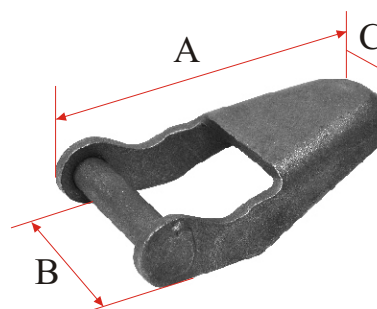
**BISAGRA DE CHAPA**

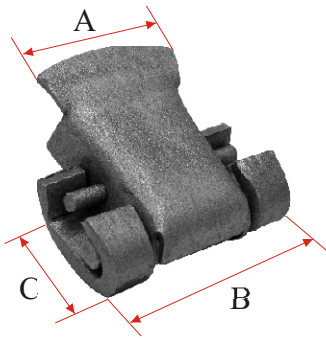
REF.	A (mm)	B (mm)	C (mm)
SSCT	215	72	28



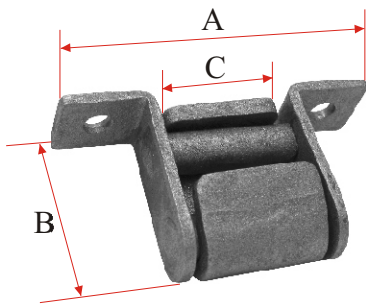
**BISAGRA DE CHAPA**

REF.	A (mm)	B (mm)	C (mm)
SSCT-C	125	70	40

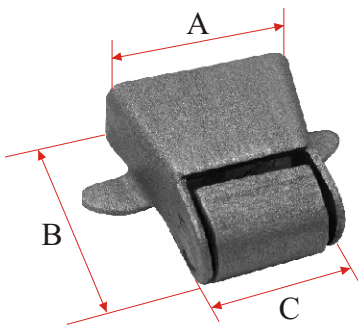




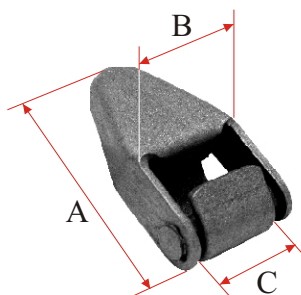
<b>BISAGRA DE CHAPA</b>			
REF.	A (mm)	B (mm)	C (mm)
TIR 2 AP	70	95	55



<b>BISAGRA DE CHAPA</b>			
REF.	A (mm)	B (mm)	C (mm)
TIR AB	108	62	40



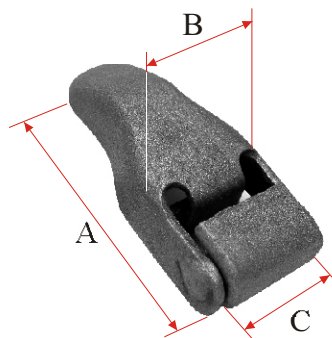
<b>BISAGRA DE CHAPA</b>			
REF.	A (mm)	B (mm)	C (mm)
TIR CD	86	80	40



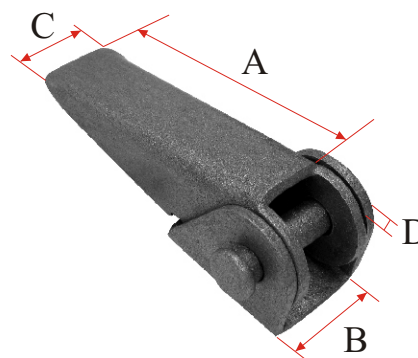
<b>BISAGRA DE CHAPA</b>			
REF.	A (mm)	B (mm)	C (mm)
BS-11	84	44	31

**BISAGRA DE CHAPA**

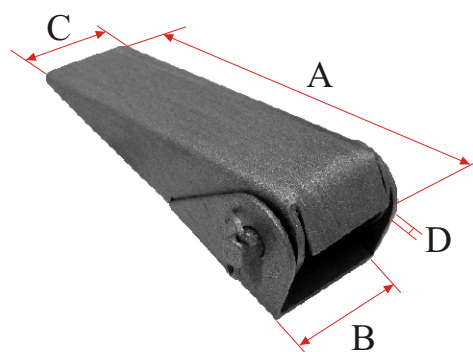
REF.	A (mm)	B (mm)	C (mm)
BS-12	130	54	40


**BISAGRA DE CHAPA**

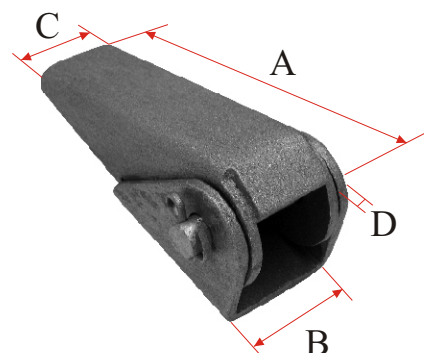
REF.	A (mm)	B (mm)	C (mm)	D (mm)
BS-20	80	28	20	3
BS-30	107	40	30	4
BS-40	141	49	40	4


**BISAGRA DE CHAPA**

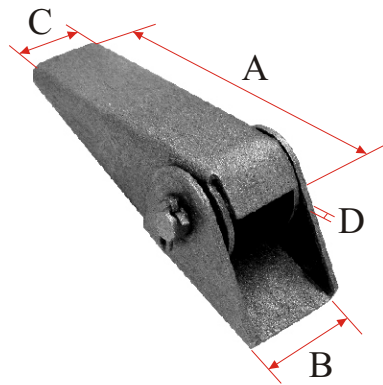
REF.	A (mm)	B (mm)	C (mm)	D (mm)
BS-1	165	60	50	3
BS-2	165	60	50	4
BS-3	155	37	33	3


**BISAGRA DE CHAPA**

REF.	A (mm)	B (mm)	C (mm)	D (mm)
BS-4	126	45	38	3
BS-5	126	48	38	4

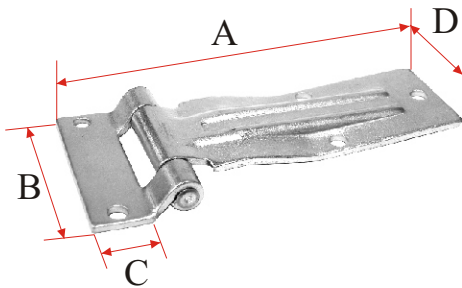






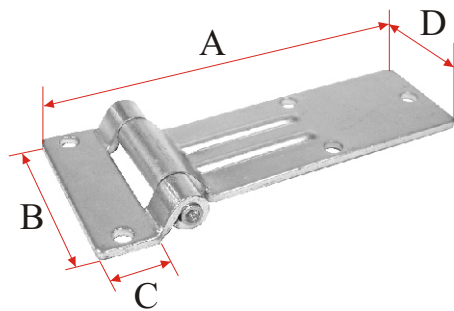
**BISAGRA DE CHAPA**

REF.	A (mm)	B (mm)	C (mm)	D (mm)
BS-6	126	45	38	3



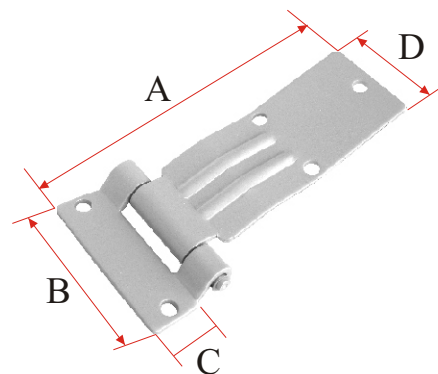
**BISAGRA DE LIBRO**

REF.	A (mm)	B (mm)	C (mm)	D (mm)
BCS-1 ZINC	185	85	25	55
BCS-1 INOX	185	85	25	55



**BISAGRA DE LIBRO**

REF.	A (mm)	B (mm)	C (mm)	D (mm)
BCS-2 ZINC	180	85	25	55
BCS-2 INOX	180	85	25	55

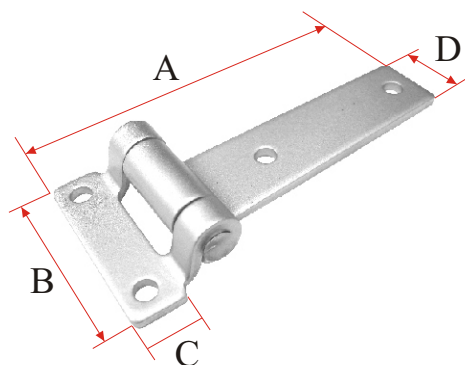


**BISAGRA DE LIBRO**

REF.	A (mm)	B (mm)	C (mm)	D (mm)
BCS-3 ZINC	180	85	25	55
BCS-3 INOX	180	85	25	55

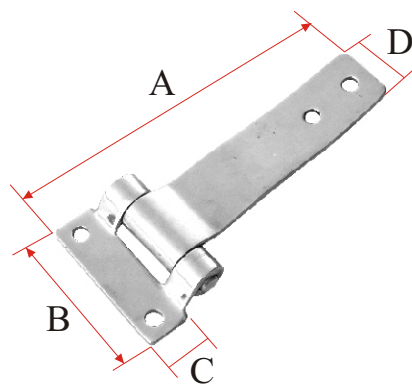
**BISAGRA DE LIBRO**

REF.	A (mm)	B (mm)	C (mm)	D (mm)
BCS-4 ZINC	135	60	16	26



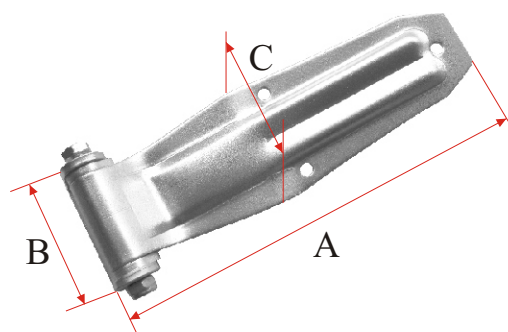
**BISAGRA DE LIBRO**

REF.	A (mm)	B (mm)	C (mm)	D (mm)
BCS-4 AC ZINC	138.5	60	19	27
BCS-4 AC INOX	138.5	60	19	27



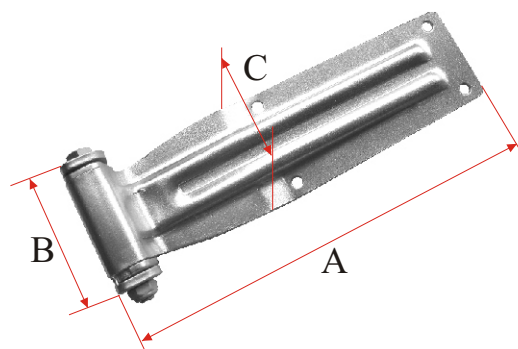
**BISAGRA DE LIBRO**

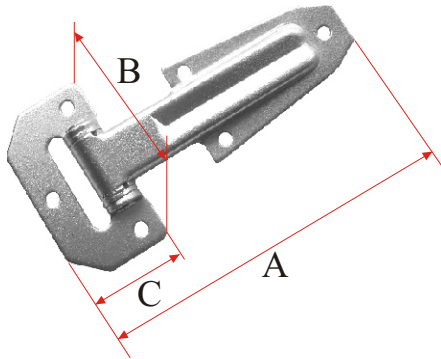
REF.	A (mm)	B (mm)	C (mm)	D (mm)
BCS-7 ZINC	275	82	83	45



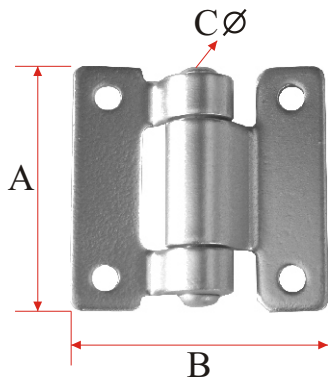
**BISAGRA DE LIBRO**

REF.	A (mm)	B (mm)	C (mm)	D (mm)
BCS-8 ZINC	320	88	82	75

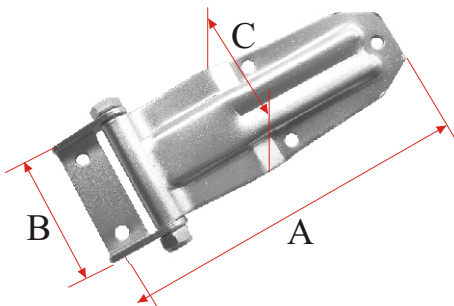




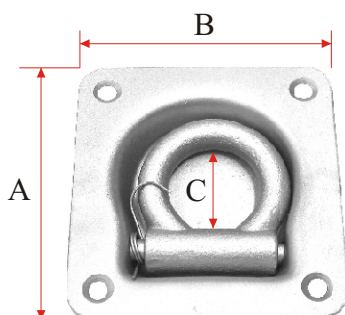
<b>BISAGRA DE LIBRO</b>				
REF.	A (mm)	B (mm)	C (mm)	D (mm)
BCS-10 ZINC	140	70	40	16



<b>BISAGRA DE LIBRO</b>			
REF.	A (mm)	B (mm)	C (mm)
BCS-11 ZINC	60	59	16



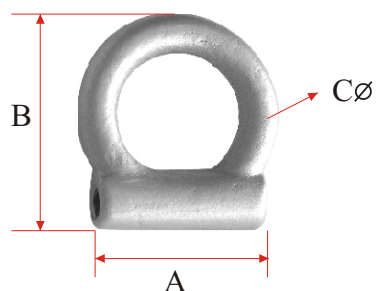
<b>BISAGRA DE LIBRO</b>				
REF.	A (mm)	B (mm)	C (mm)	D (mm)
BCS-12 ZINC	220	77	70	62



<b>ANILLA</b>			
REF.	A (mm)	B (mm)	C (mm)
AE-1 ZINC	102	95	33

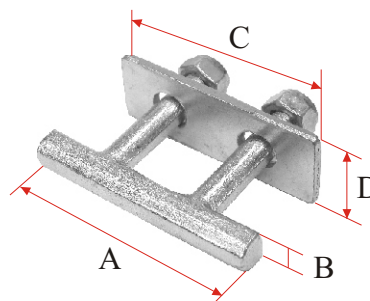
**ANILLA**

REF.	A (mm)	B (mm)	C (mm)
AE-1 S/A ZINC	48	45	12



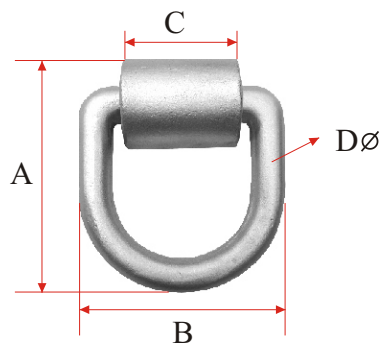
**ANILLA**

REF.	A (mm)	B (mm)	C (mm)	D (mm)
AT-1 ZINC	95	14	90	30



**ANILLA**

REF.	A (mm)	B (mm)	C (mm)	D (mm)
AES-2 ZINC	130	115	65	19



**ANILLA**

REF.	A (mm)	B (mm)	C (mm)	D (mm)
AES-1	172	128	61	26

